

MSP25 Mobile Sensor Platform – Additional Information C

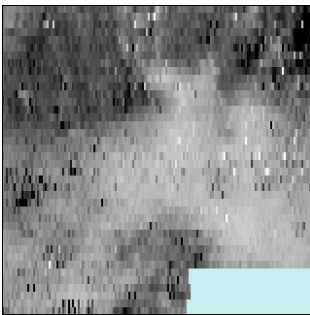
Castleshaw Roman Fort Survey October 2015



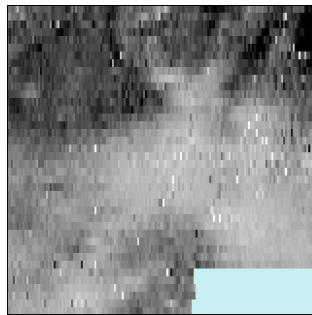
Combined resistance and gradiometer survey using RM85 and MSP25. Survey area 40m x 40m, sample interval 0.25m, traverse interval 1m, speed about 0.8s /m. Despite the rough ground cover relatively few noise spikes. Raw data is shown below, plus processed versions (Despike, HPF, LPF)

With thanks to The Friends of Castleshaw Roman Forts
http://castleshawarchaeology.co.uk/geophys_2015_10_16.htm

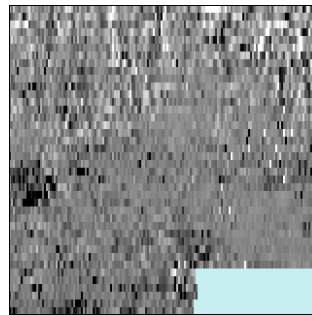
Video:
<https://www.facebook.com/video.php?v=1045391745501351>



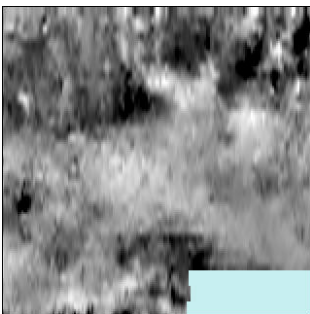
Alpha (+/-2.5 SD)



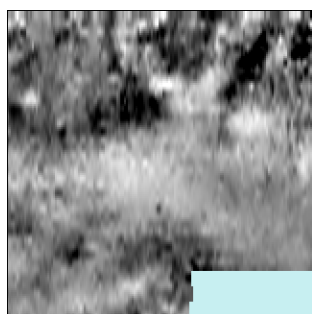
Beta (+/-2.5 SD)



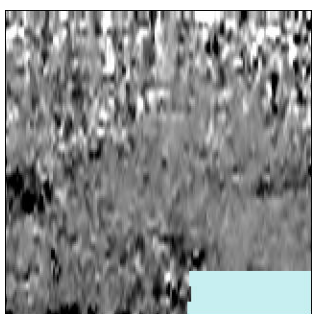
Gamma (+/-2.5SD)



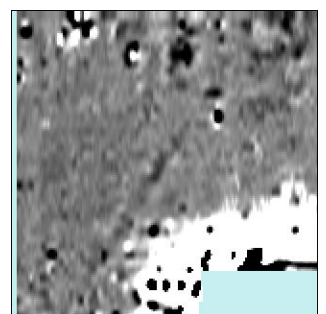
Alpha (+/-2.5 SD)



Beta (+/-2.5 SD)



Gamma (+/-2.5SD)



Gradiom.(+/-10nT)

