

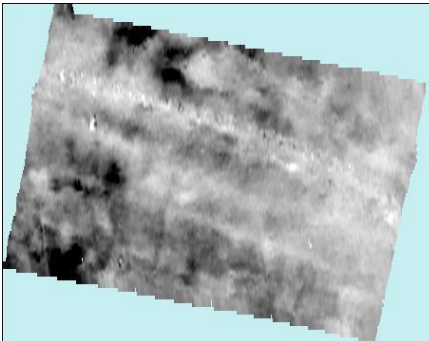
# MSP25 Mobile Sensor Platform – Additional Information D

Temple Newsam Survey March 2016

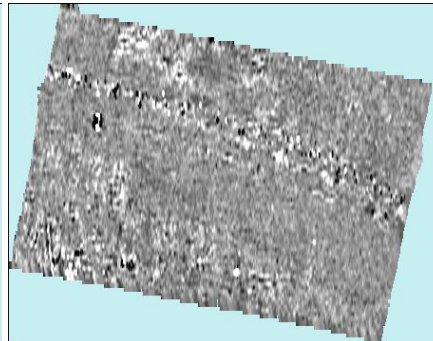


Combined resistance and gradiometer survey using RM85 / MSP25 with FM256 and FGM650. Survey area 100m x 70m, 100m traverses, sample interval 0.25m, traverse interval 1m, speed about 0.85s /m. Small dog-tooth plates fitted to wheels. Processing used a combination of Geoplot 3.00, GridInquest and Geoplot 4.00 beta. Data GPS referenced. Survey time a little over 2 hours not including setting up, breaks & interruptions.

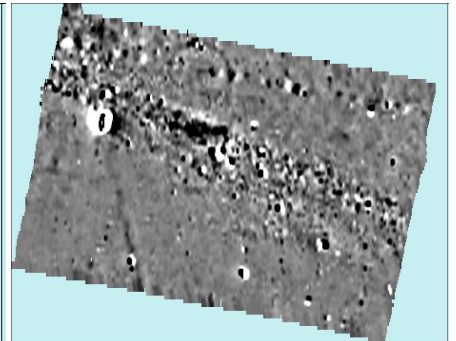
Data sets for alpha, gamma, gradiometer and micro-topography are shown below with overlays made using the Geoplot 4.0 Animation facility – all show distinctive and complimentary features. The results shows high resistance structures at the top (west) cut into by a service line shown on the gradiometer plot. There are indications of further structures to the east along with service lines / water feeds which may be associated with a lake depicted in an early painting and other garden features depicted in a Jan Kip engraving.



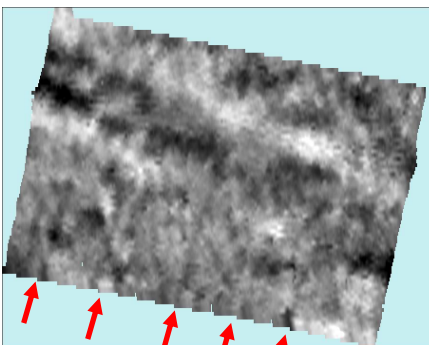
Alpha (-2/+3SD)



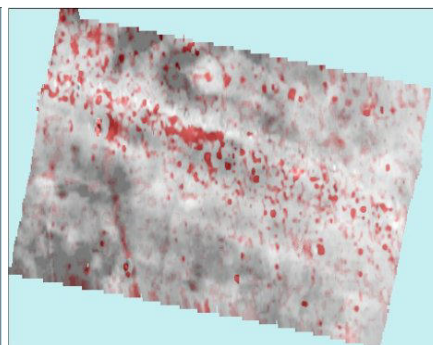
Gamma (-2/+3SD)



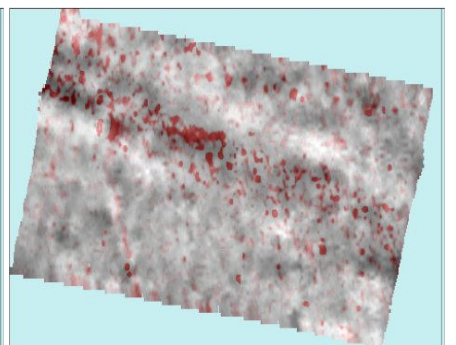
Gradiometer (+/-20nT)



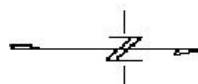
Micro- topography HPF (+/- 0.1m)



Red FGM650 over grey Alpha



Grey Topography over red FGM650



@GeoscanResearch



GEOSCAN

