

Running Geoplot 3 on Windows 7 and Vista

Version 5 18/05/2011

General Requirements

You will require a 32 bit version of Windows 7 or Vista to install and run Geoplot 3 on - it will not install or run on 64 bit versions. If you have a 64 bit version of Windows 7 then consider creating a dual boot system with a 32 bit version of Windows such as XP. The Virtual PC2007 and XP Mode offered as part of 64 bit versions of Professional, Ultimate and Enterprise Windows 7 do not allow Geoplot to run due to problems with it's handling of USB devices. An alternative to Virtual PC2007 and XP Mode that has been used successfully by one Geoplot user is to install a copy of VMWare Workstation and then use a copy of XP in the virtual environment. This does give access to USB devices but does mean purchase of the additional software. VMWare Player is a free version that would appear to offer similar operation to the Workstation version but has not been found to work in initial tests.

You will require a USB dongle protected version of Geoplot – earlier versions of Geoplot protected with an Az-Tech LPT dongle or Software Authorization will not operate. You should also be installing the latest version of Geoplot 3, version 3.00u, or later. The following discussion is based on tests done using the Ultimate version of 32 bit 7 and Vista.

There are important notes below that you should follow before attempting to print from Geoplot.

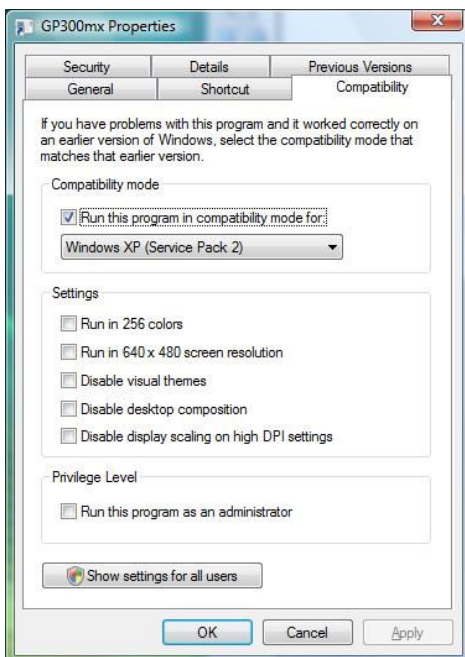
Installation

You should be logged on as an Administrator with full control of installations. Install Geoplot following the normal instructions.

If you are using the Aero Theme then once installed you will find that the normal Geoplot 'world' icon is not displayed but instead is replaced by a DOS type icon – this is due to a Vista bug when used with 16 bit applications with the Aero Theme. This does not affect normal operation but you can choose a new icon if you right click on the program icon and in Shortcut select 'Change Icon...'. If you choose to use the Classic Windows Theme then the correct icon should be displayed.

If you are using Vista then you next have to set Compatibility mode (this is not usually required for Windows 7). Right click on the program icon and select Properties, then the Compatibility tab. Set this to 'Windows XP (Service Pack 2)' – see screenshot below – and click Apply and OK.

If you have difficulties running Geoplot in Windows 7 then also make the Compatibility setting.



Running Geoplot

It is very important that you do **not** run Geoplot until you apply a printing setting in Options discussed below.

When run as usual we have found that Geoplot will print normally but only once. Even if you exit Geoplot and restart Geoplot again the same problem exists and you cannot do a further print. However, if you exit Geoplot, change the default to another printer, then you will be able to print to this new printer, but only once. You then have to exit Geoplot, change back to the previous default printer and again do one print.

At the moment there is no easy way round this problem. The problem lies with the Microsoft COMMDLG.DLL, which is used to display and change the printer properties form during printing. We have not come across a direct way round this problem – trying different versions of COMMDLG.DLL does not help. However, we have provided some code changes in version U of Geoplot 3 that helps gets round this problem. This uses the fact that if the printer properties dialog box is not displayed then you can print as many times as you like. This requires the user to choose and specify the settings for the default printer required that you wish to use with Geoplot before it is launched. As well as setting the default printer properties in advance, once in Geoplot you should also select the Geoplot Environment Option and uncheck the 'Display Printer Dialog Form' checkbox. When running Geoplot in other versions of Windows 'Display Printer Dialog Form' would normally be left checked so that the printer dialog box can be used normally.

If you have already tried printing with the "Display Printer Dialog Form" checkbox checked then, to clear the problem, you will need to uninstall the printer driver, uncheck the "Display Printer Dialog Form" in Geoplot, reinstall the printer driver and set that as your default.

Data Download

Download can be directly into a serial port or via a USB to serial adapter, though not all adapters may work correctly. We have done tests on a standard serial port and also with a Newlink USB serial adapter and the adapter we provide with our instruments. Other users have found Belkin adapters to work correctly with other versions of Windows though we have not tested these on Vista. It is very important to follow the installation instructions for the adapter correctly otherwise it may not function – usually the driver is installed *before* plugging in the adapter. The driver software that accompanies the converter will probably assign its virtual COMM port to be a number greater than "1". If using Geoplot 3, you should select the Input tab in Environment Options and set "Download RS232 COMM Port" to match this number. (In XP and Vista you can check to see what port the converter is assigned to by clicking on Start, Control Panel, System, Hardware, Device Manager, Ports – follow a similar route for other operating systems. If the COMM port number is larger than the range offered by Geoplot you can change this by clicking on the Port Settings tab, then Advanced).

If you use a USB converter you will find that you have to exit Geoplot after a download in order to clear data left in the adapter's buffer. For example, if you come to dump data and see the message "Receiving data..." instead of the normal "Waiting for data...", even though you have not yet pressed DUMP on the instrument, this is a sure sign that data is still left in the adapter's buffer. If you do not exit Geoplot at this stage and continue downloading, the data will be scrambled.