

Running Geoplot 3 on Windows Vista

Version 2 11/9/2007

General Requirements

You will require a 32 bit version of Vista to install and run Geoplot 3 - it will not install or run on 64 bit versions.

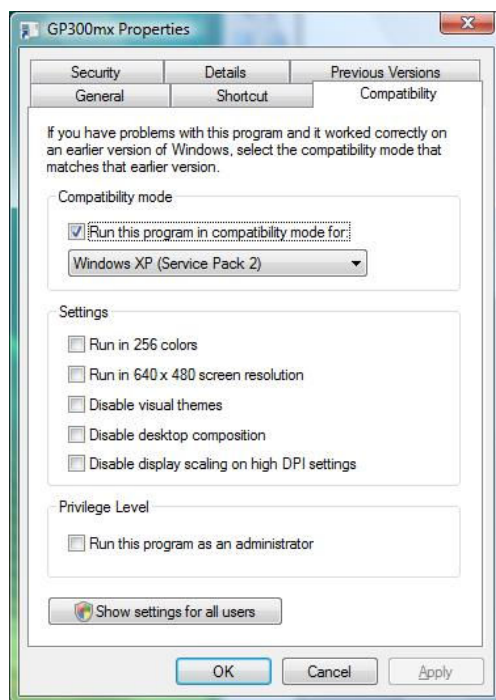
You will require a USB dongle protected version of Geoplot – earlier versions of Geoplot protected with an Az-Tech LPT dongle or Software Authorization will not operate. You should also be installing the latest version of Geoplot 3, version U. The following discussion is based on tests done using the Ultimate version of 32 bit Vista.

Installation

You should be logged on as an Administrator with full control of installations. Install Geoplot following the normal instructions.

If you are using the Aero Theme then once installed you will find that the normal Geoplot ‘world’ icon is not displayed but instead is replaced by a DOS type icon – this is due to a Vista bug when used with 16 bit applications with the Aero Theme. This does not affect normal operation but you can choose a new icon if you right click on the program icon and in Shortcut select ‘Change Icon...’. If you choose to use the Classic Windows Theme then the correct icon should be displayed.

You next have to set Compatibility mode. Right click on the program icon and select Properties, then the Compatibility tab. Set this to ‘Windows XP (Service Pack 2) – see screenshot below – and click Apply and OK.



Running Geoplot

Geoplot will run normally, apart from some printing issues discussed later.

Data Download

Download can be directly into a serial port or via a USB to serial adapter, though not all adapters may work correctly. We have done tests on a standard serial port and also with a Newlink USB serial adapter.

Other users have found Belkin adapters to work correctly with other versions of Windows though we have not tested this. Plugging the Newlink USB adapter in caused Vista to search Windows Update for a suitable driver (the PC was online at the time). After a few minutes (!) the driver was correctly installed as a Prolific USB to Serial Comm Port, and was given the address Comm Port 3. Once the adapter is installed you should go to the Geoplot Environment Options, select the Input tab and set the download Comm port to the appropriate number, in this case 3.

Printing

When run as usual we have found that Geoplot will print normally but only once. Even if you exit Geoplot and restart Geoplot again the same problem exists and you cannot do a further print. However, if you exit Geoplot, change the default to another printer, then you will be able to print to this new printer, but only once. You then have to exit Geoplot, change back to the previous default printer and again do one print.

At the moment there is no easy way round this problem. The problem lies with the Microsoft COMMDLG.DLL, which is used to display and change the printer properties form during printing. We have not come across a direct way round this problem – trying different versions of COMMDLG.DLL does not help. However, we have provided some code changes in version U of Geoplot 3 that helps gets round this problem. This uses the fact that if the printer properties dialog box is not displayed then you can print as many times as you like. This requires the user to choose and specify the settings for the default printer required that you wish to use with Geoplot before it is launched. As well as setting the default printer properties in advance, once in Geoplot you should also select the Geoplot Environment Option and uncheck the 'Display Printer Dialog Form' checkbox. When running Geoplot in other versions of Windows 'Display Printer Dialog Form' would normally be left checked so that the printer dialog box can be used normally.